



VORTEX FLUID SYSTEMS INC.

vortexfluidsystems.com

ORBITAL® 3000 DRYING SHAKER WITH WALKWAYS

DESCRIPTION

The ORBITAL® 3000 Drying Shaker with walkways is a four pannel shaker with extended feed section, mounted on an open frame base with personel walkways.

BENEFITS IN PROCESSING CUTTINGS

One advantage of the VFSI drying shaker is in processing cuttings. Competitor units have stationary sections which funnel cuttings to the shaker. These areas commonly plug up, must be claered, and can casue a mess. The VFSI Orbital 3000 Drying shaker features an extended section and are vibrated onto the screen eliminating cuttings holdup.

PERFORMANCE

The screen area of the Orbital 3000 Drying Shaker has 30 ft² with 6 g's of acceleration. The combination of screen surface area, high g's, and screen motion make the Orbital 3000 one of the best performing machines in the industry. The Orbital 3000 shakers use progressive elliptical motion for extended screen life and excellent conveyance.

FEATURES

ORBITAL® shakers have many beneficial features.

- ☑ **ACCELERATION:** 6 g's (standard) to 7.5 g's (optional)
- ☑ **SCREEN AREA:** 30 ft² of screening area
- ☑ **MOTION:** eliptical motion
- ☑ **SCREEN LIFE:** ORBITAL® shakers have exceptional screen life
- ☑ **SEAL WELDED:** fully seal welded baskets.
- ☑ **LOW MAINTENANCE:** ultra low maintenance design
- ☑ **LOW NOISE:** 70 db standing 3ft from discharge
- ☑ **ABRASION PERTECTION:** two layers of powder coat
- ☑ **SCREEN SEALS:** patent pending screen seals are as easy to change as a set of screens
- ☑ **VIBRATORS:** vibrators are one of the most overbuilt electrically and mechanically in the industry
- ☑ **MANUFACTURING:** Made in USA



GRATED WALKWAYS

The grated walkways on each side of the unit keep the operator "out of the mud" and provide a convenient height to change screens and monitor performance.



VORTEX FLUID SYSTEMS INC.
Serving our customers worldwide...

www.vortexfluidsystems.com
office: 918.810.7798 • fax: 918.492.1688



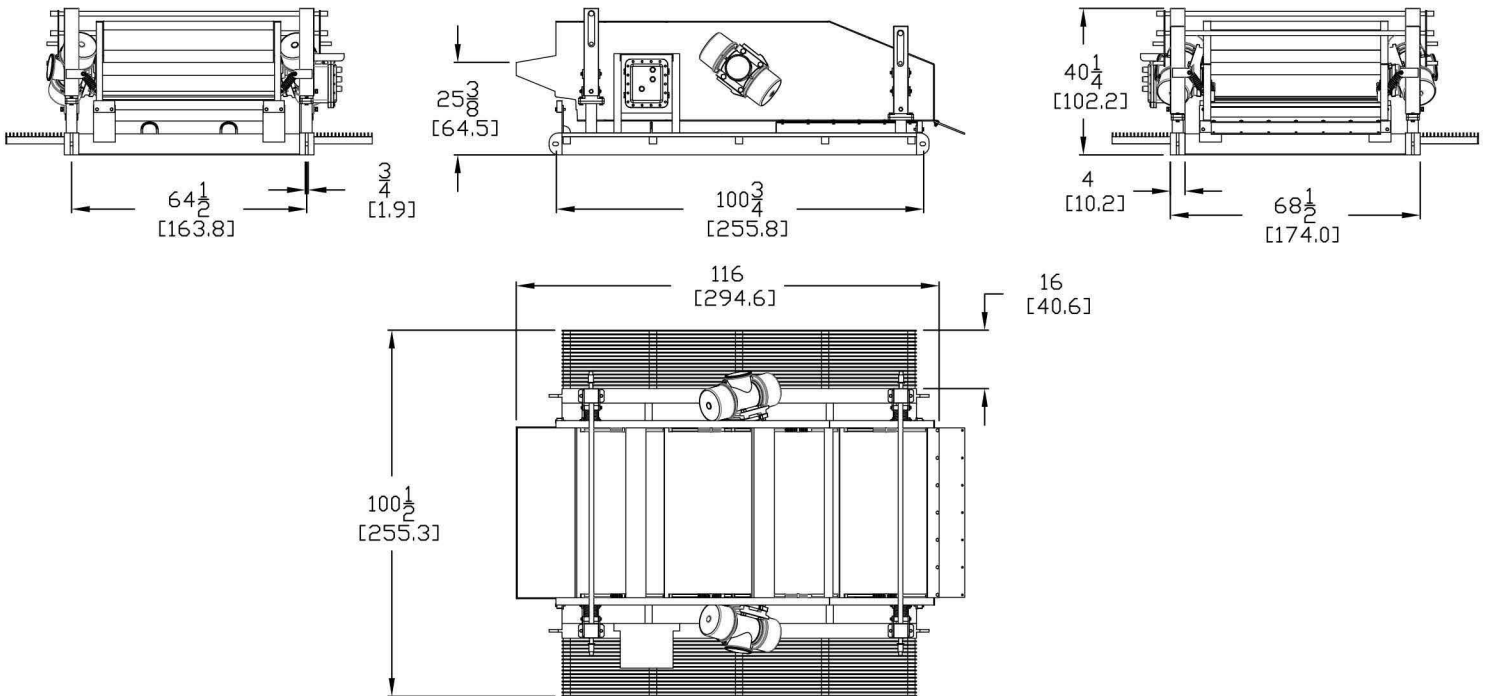
VORTEX FLUID SYSTEMS INC.

vortexfluidsystems.com

SPECIFICATIONS AND DIMENSIONS

ORBITAL® 3000 DRYING SHAKER WITH WALKWAYS

NAME: Orbital 3000 Sump Drying Shaker
SCREEN AREA: 30 ft ² [2.8 m ²]
"G" FORCE: 6 g's (standard), 7.5 g's (optional)
MOTION: Progressive Elliptical
DIMENSIONS (LxWxH): 116x100-1/2x40-1/4in (295x255x102cm)
BASE DIMENSIONS (LxW): 100-3/4x68-1/2in (256x174cm)
WEIGHT: 3200lb [1455kg]
FEED HEIGHT: 25-3/8in [65cm] (standard) - adjustable
ADJUSTMENT ANGLE: 0 to 8 degrees
ANGLE CHANGE TYPE: hand crank (standard) or center wheel (optional)
SCREEN TYPE: pretension
SCREEN NUMBER: 4 screens
SCREEN SIZE: 48 x 24 in [122 x 61 cm]
MOTORS: Italvebras, 1200 or 1800 rpm, 50 or 60 hz
MOTOR TYPE: explosion proof
ELECTRICAL BOX TYPE: explosion proof



VORTEX FLUID SYSTEMS INC.
Serving our customers worldwide...

www.vortexfluidsystems.com
office: 918.810.7798 • fax: 918.492.1688